

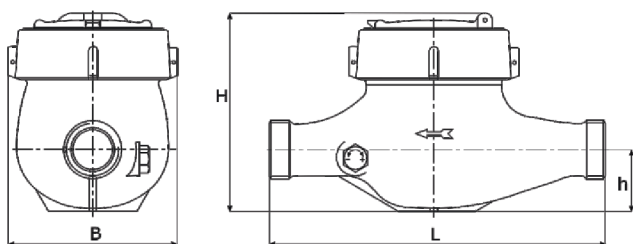


- ▼ Multi-jet dry type
- ▼ Display on 5 drums m^3 and 4 pointers for litres
- ▼ Optional check valve
- ▼ Magnetic field protection
- ▼ Measuring range up to R160
- ▼ Optional pulse, M-bus, radio frequency output
- ▼ IP68 Protection
- ▼ Plastic housing
- ▼ Water temperature up to 50 °C

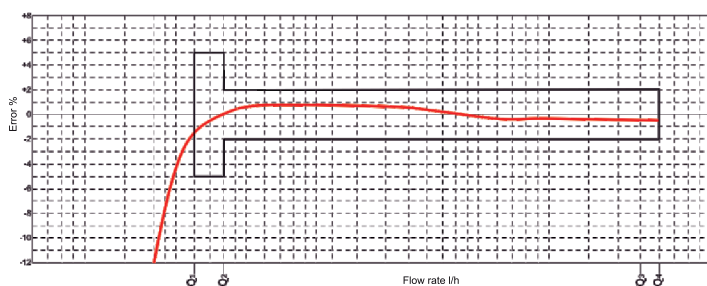
Technical Specification

Nominal diameter	DN	mm	15	20	20
Nominal flow rate	Q_3	m^3/h	$\leq 2,5$	$\leq 2,5$	≤ 4
Maximum flow rate	Q_4	m^3/h	$\leq 3,125$	$\leq 3,125$	≤ 5
Minimum flow rate	Q_1	l/h	$>=15,625$ $>=62,5$	$>=15,625$ $>=62,5$	$>=25$ $>=100$
Transitional flow rate	Q_2	l/h	$1,6 \times Q_1$	$1,6 \times Q_1$	$1,6 \times Q_1$
Maximum working pressure	P_{max}	bar	16	16	16
Pressure loss ($_{max,Q3}$)	ΔP	bar	0,63	0,63	0,63
Maximum working temperature	T_{max}	°C	50	50 / 90	50 / 90
Measuring range	Q_1/Q_4	R	≤ 160 (H) ≤ 40 (V)	≤ 160 (H) ≤ 40 (V)	≤ 160 (H) ≤ 40 (V)
Overall length	L	mm	165/190	190	190
Maximum register indication		m^3	99.999	99.999	99.999
Verification scale interval		l	0,05	0,05	0,05
Width	B	mm	103	103	103
Total height	H	mm	116	116	116
Height to pipe axis	h	mm	34	34	37
Connection thread of meter	-	-	G3/4B	G1B	G1B
Nominal size	DN	mm	15	20	20
Piping dimensions	-	-	G1/2B	G3/4B	G3/4B
Installation position			H+V	H+V	H+V

Dimensions



Error Curve



Pressure Loss

